



GRAND HOTEL
NATIONAL
LUZERN

SEMINARS

CLEARER THINKING

Are you planning a workshop or seminar? Are you looking for the appropriate setting for a crucial meeting, an exciting presentation or an important conference? Do you want to organise a series of lectures in a central location in Lucerne?

The Grand Hotel National offers you a stylish atmosphere conducive to ensuring concentration and focus. Our rooms exude a feeling of discreet luxury and seem tailor-made for an inspiring exchange of views and insights.

It is a matter of course that we provide an innovative work environment combined with top-quality conference technology.

At the Grand Hotel National, the professionalism of the staff and the magnificent view over the lake offer a unique blend of business and pleasure.

A total of seven rooms provide an elegant setting for between 8 and 230 conference-goers.

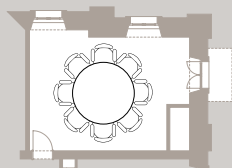
For events for up to 30 participants, you can choose one of the five stylish business rooms: "Harlekin", "Marmara", "Atlantik", "Pazifik" and "Méditerranée". For larger occasions, the magnificent "Ritz" and "Escoffier" rooms can be reserved individually or together, offering the ideal setting for up to 230 visitors.

Welcome up to 650 guests. The Ritz and Escoffier rooms can be combined to host elegant, stand-up receptions for up to 650 people.

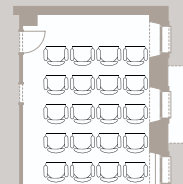
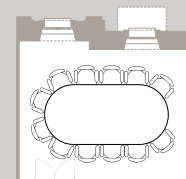
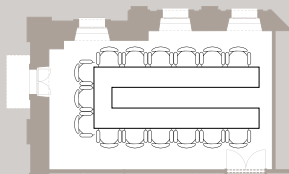
Our events consultant takes care of your occasions from A to Z. Take advantage of our experience and settle for nothing but the best.

TASTEFUL WORK ENVIRONMENTS FOR BETWEEN 8 AND 30 PEOPLE

Lake Lucerne



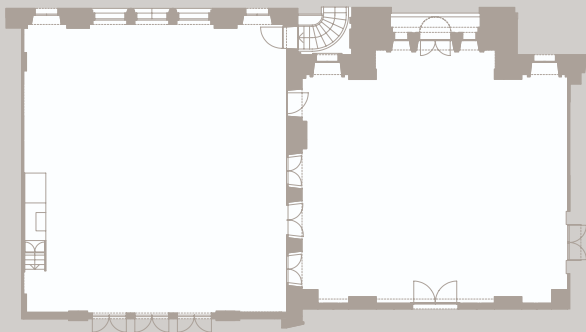
Lake Lucerne



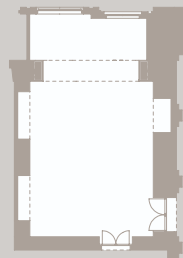
	MARMARA	ATLANTIK	PAZIFIK	MÉDITERRANÉE
Dimensions	6 x 4.75 m	9 x 5.6 m	7.1 x 5.6 m	7.1 x 5.2 m
Height	2.6 m	2.6 m	2.6 m	2.6 m
Area	28.5 m ²	50.4 m ²	39.7 m ²	36.9 m ²
Boardroom	8 people	20 people	12 people	12 people
Theatre	–	30 people	20 people	20 people
U-form	–	17 people	14 people	14 people
T-form	–	15 people	14 people	15 people
Seminar	–	20 people	–	–

AVAILABLE SEPARATELY OR TOGETHER FOR UP TO 230 PARTICIPANTS

Lake Lucerne



Lake Lucerne



A CHOICE OF ROOMS

Exclusive reservations for your celebration:
 Parts of the Restaurant National
 Parts of the Lake Terrace
 The entire National Bar

	THE RITZ ROOM	THE ESCOFFIER ROOM	HARLEKIN
Dimensions	14.7x 13.6 m	12.6 x 13.9 m	10.9 x 5.5 m
Height	6.09 m	6.4 m	3.5 m
Area	200 m ²	175 m ²	55 m ²
U-form	40 people	20 people	–
Seminar	80 people	60 people	15 people
Banquet	130 people	100 people	15 people
Theatre	150 people	130 people	20 people
Reception	350 people	300 people	30 people

INDIVIDUAL DAILY RATES

Mineral water (0.75 l)	CHF	9.00
Fruit basket (per person flat rate)	CHF	3.00
Stand-up buffet (per person without drinks)	CHF	35.00
2-course business lunch (per person without drinks)	CHF	30.00
3-course business lunch (per person without drinks)	CHF	40.00
3-course dinner (per person without drinks)	CHF	65.00

The menu suggestions will be prepared for you by our head chef according to the seasonal products available.

“Classic“ coffee break (per person per break) CHF 15.00

We serve coffee, tea and orange juice with a selection of fruit together with fresh croissants in the morning and a selection of pastries in the afternoon.

Coffee&Tea unlimited (per person per day) CHF 20.00

You can enjoy tea and coffee either in the seminar room or the break area, not only during the specified breaks but throughout the entire day. During official breaks, we also serve orange juice and a selection of fruit together with fresh croissants in the morning and a selection of pastries in the afternoon.

DAILY RATES FOR TECHNICAL EQUIPMENT

Screen	CHF	30.00
Overhead projector	CHF	45.00
Video projector	CHF	150.00
Flipchart	CHF	45.00
Pin board	CHF	20.00
Lectern	CHF	50.00
Microphone system	CHF	250.00
Clip-on microphone (max. 2)		on request
Hand-held microphone (max. 2)		on request
Stage	CHF	200.00

We will be happy to provide you with information about the rates for additional technical equipment on request.

ADMISSION TO THE FITNESSPARK NATIONAL

Our guests benefit from preferential rates for admission to the 5,000m² National wellness and fitness park with oriental spa, outdoor swimming pool, whirlpool/ massage pool, sanarium, dry sauna, fragrant cave, eucalyptus steam bath and a fitness area boasting state-of-the-art sports equipment.

SEMINAR PACKAGES

Daily rate per participant **CHF 105.00**

- Room rent
- 2 "classic" coffee breaks
- Basic technical equipment (1 video projector, 1 overhead projector, 1 flipchart, 1 screen, 1 pin board, 1 presenter's case)
- Mineral water and writing materials
- 3-course business lunch in the Restaurant National, incl. mineral water
- Coffee and tea, brain food
- Free access to our pool floor

Half-day rate per participant **CHF 95.00**

The half-day rate (up to 5 hours) contains the same services but with only one coffee break.

ROOM HIRE, INDIVIDUAL RATES

"Marmara" business room per day	CHF 215.00
Half day (up to 5 hours)	CHF 160.00
"Harlekin" business room with lake view per day	CHF 450.00
Half day (up to 5 hours)	CHF 300.00
"Atlantik", "Pazifik" and "Méditerranée" with lake view per day	CHF 450.00
Half day (up to 5 hours)	CHF 300.00

For the Ritz and Escoffier rooms, we will be happy to prepare a personalised offer.

All prices include the statutory value added tax.

GRAND HOTEL NATIONAL LUZERN

Grand Hotel National AG, Haldenstrasse 4, 6006 Luzern, Switzerland, T +41 41 419 09 09, F +41 41 419 09 10
info@grandhotel-national.com, www.grandhotel-national.com

