

Meetings at the Grand Hotel National



Conferences, designed to leave an impression

Anyone who has stayed with us is impressed by the unique location and view, the historic building, the first-class service and the exceptionally creative cuisine.

Whether an in-house workshop, a public seminar or an international conference - whatever you are planning, we offer you the perfect setting. We organize your event with commitment, always focusing on your wishes.

All rooms offer natural daylight, air conditioning or a cooling ventilation. Of course, WIFI and all the usual technical aids are also available. The historical ambience is unique and provides a worthy setting for your event.

Our packages

Half-day flat rate (up to five hours)
CHF 85.00 per person per half-day

- Rent for the meeting room
- Seminar screen / beamer & projection screen
- Writing material
- Mineral water in the meeting room
- One coffee break in the morning or afternoon
- Two-course business lunch of the chef's choice incl. 0.5l of mineral water and coffee (a surcharge of CHF 15.00 will be charged for each additional course)

Additional services upon request

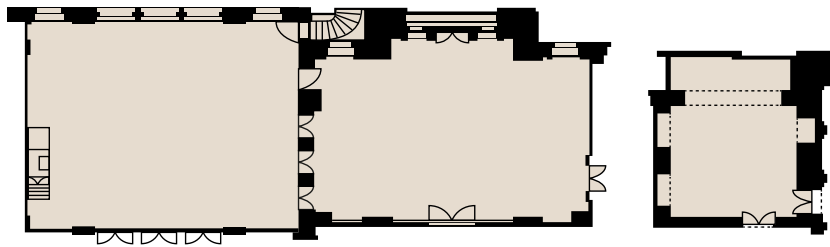
Whether it's a welcome coffee, a delicious 3-course dinner, or other extras – we offer numerous options to tailor your event exactly to your needs. Please feel free to contact us; we will be happy to advise you personally and create the perfect offer for you.

All-day flat rate (from five hours)
CHF 135.00 per person per day

- Rent for the meeting room
- Seminar screen / beamer & projection screen
- Writing material
- Mineral water in the meeting room
- Two coffee breaks, one in the morning and one in the afternoon
- Two-course business lunch of the chef's choice incl. 0.5l of mineral water and coffee (a surcharge of CHF 15.00 will be charged for each additional course)



Our facilities

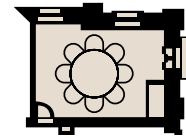


Ritz

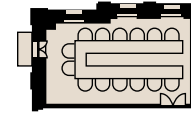
Escoffier

Harlekin

	Ritz	Escoffier	Harlekin
Dimensions	14.7 × 13.6 m	12.6 × 13.9 m	10.9 × 5.5 m
Height	6.1 m	6.4 m	3.5 m
Area	200 m ²	175 m ²	55 m ²
Block table	–	–	20 people
U-shape	40 people	40 people	–
Seminar	80 people	60 people	20 people
Theatre	150 people	130 people	20 people
Reception	300 people	260 people	30 people
Banquet	130 people	100 people	20 people
Long table	144 people	120 people	–

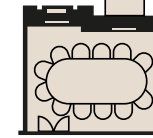


Marmara



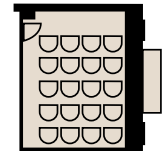
Atlantik

(only if required)



Pazifik

(only if required)



Mediterranee

(only if required)

	Marmara	Atlantik	Pazifik	Mediterranee
		<i>(only if required)</i>	<i>(only if required)</i>	<i>(only if required)</i>
Dimensions	6 × 4.7 m	9 × 5.6 m	7.1 × 5.6 m	7.1 × 5.2 m
Height	2.6 m	2.6 m	2.6 m	2.6 m
Area	28 m ²	50.4 m ²	39.7 m ²	36.9 m ²
Block table	8 People	20 people	12 people	12 people
U-shape	–	15 people	14 people	14 people
Seminar	–	16 people	14 people	14 people
Theatre	–	30 people	20 people	20 people



Royal nights of extravagance

The Grand Hotel National offers you a first-class atmosphere where your business meetings and conferences become a special experience. So why leave when it is so nice?

Our individually designed rooms and suites offer the perfect retreat after a successful day of work. They combine the charm of bygone eras with modern comforts for a pleasant stay. The historic furnishings, combined with high, elegantly wallpapered walls, create an exclusive and relaxing ambience, perfect for unwinding after a busy day of meetings.



