



GRAND HOTEL
NATIONAL
LUZERN

Meeting Brochure



Meet in stately surroundings

Indulge in the luxury of times gone by. Stay where the European aristocracy once resided. Where César Ritz, probably the most famous hotelier of all time, laid the foundation for the upscale international hotel industry as the hotel's first director. In the GRAND HOTEL NATIONAL - the first house on the Lucerne waterfront.

Anyone who has been here is impressed. By the unique location and view,

the historic building, the first-class service and the extraordinarily creative cuisine of Jeffrey van Zijl, who was awarded the title of Europe's youngest 2-star Michelin chef in 2018.

Whether it's an in-house workshop, a public seminar or an international conference - whatever you are planning, we offer the perfect setting. We organise your event in a committed and professional manner - always focusing on your wishes.

Let us advise you and benefit from our "savoir faire" and experience. We look forward to spoiling you and your guests and making your event a successful one.

Your Event Team

Historic premises

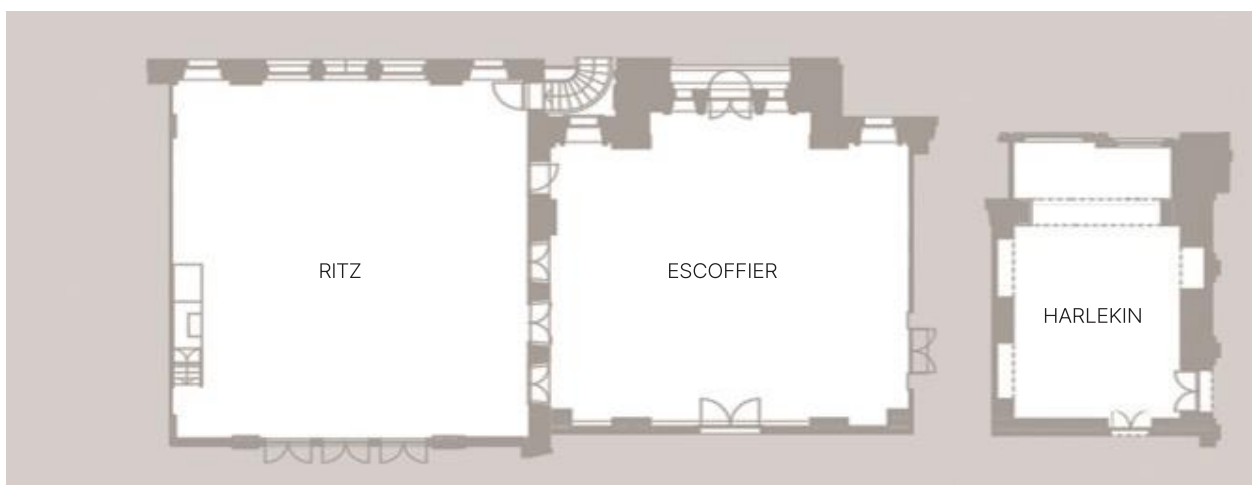
The Belle Époque stands for eternal elegance and carefree enjoyment of life. In our two ballrooms "Ritz" and "Escoffier", the salon "Harlekin" and the small "Harlequin" salon and the small business rooms, this flair can be felt at every turn.

Who has probably already celebrated and danced here - and what ideas and great plans have already been born here?

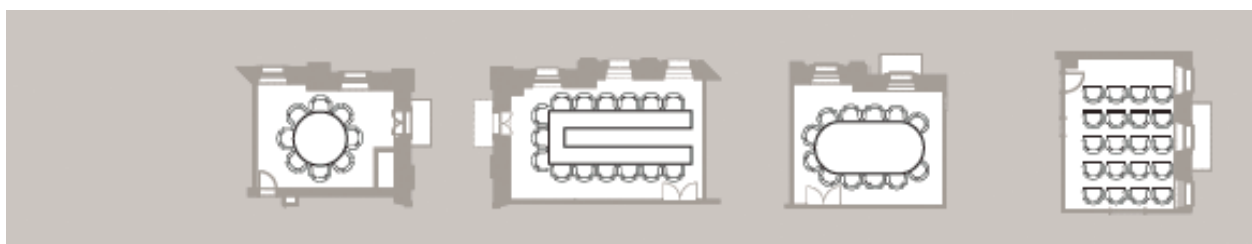
All rooms have daylight and openable windows as well as air conditioning or cooling ventilation. Of course, WLAN and all the usual technical aids are also available.

The historical ambience is unique and provides a worthy setting for your event.





	Room RITZ	Room ESCOFFIER	HARLEKIN
Mass	14.7 x 13.6 m	12.6 x 13.9 m	10.9 x 5.5 m
Height	6.09 m	6.4 m	3.5 m
Surface	200 qm	175 qm	55 qm
Welcome	300 Persons	260 Persons	30 Persons
Bankett	130 Persons	100 Persons	20 Persons
Block	-	-	20 Persons
Meeting	80 Persons	60 Persons	20 Persons
Theater	150 Persons	130 Persons	20 Persons
U-Form	40 Persons	40 Persons	-



	ATLANTIK	PAZIFIK	MARMARA	MEDITERRANEE
Mass	9 x 5.6 m	7.1 x 5.6 m	6 x 4.7 m	7.1 x 5.2 m
Height	2.6 m	2.6 m	2.6 m	2.6 m
Surface	50.4 qm	39.7 qm	28 qm	36.9 qm
Block	20 Persons	12 Persons	8 Persons	12 Persons
T-Form	15 Persons	14 Persons	-	14 Persons
U-Form	17 Persons	14 Persons	-	14 Persons
Theater	30 Persons	20 Persons	-	20 Persons

Elegant, stylish and inspiring

At the GRAND HOTEL NATIONAL you will feel the charm of the past and the liveliness of the present, combined with warm hospitality.

In addition to the beautiful ambience and the magnificent view, you can expect attentive and appreciative service from our event team.

Our halls and lounges, the restaurant and the lakeside terrace provide a worthy setting for your event in summer and winter.

It is not our job to predict the future, but to be well prepared for it.

Perikles, leading statesman of Greek antiquity





GRAND HOTEL NATIONAL LUZERN

Haldenstrasse 4, 6006 Lucerne

T: 041 419 09 09

info@grandhotel-national.com

www.grandhotel-national.com
